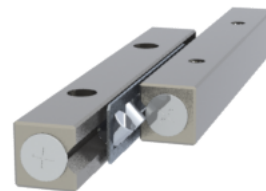


## GRV12 - 200

Call 800-321-7800 or visit us online at [www.nookindustries.com](http://www.nookindustries.com) to configure and order your GRV12 - 200 today!



Product Info	
Part Number	GRV12 - 200
Max Stroke [mm]	160
Material Specification	
Rail	SUJ2
Roller	SUJ2
Retainer	SUS304
Dimensions	
H [mm]	58
T [mm]	28
W [mm]	26.9
L [mm]	200
n [mm]	14
P [mm]	100
L1 [mm]	50
L2 [mm]	1
ØD [mm]	12
L3 [mm]	130
R [mm]	7
P1 [mm]	11
P2 [mm]	18
A [mm]	12
M	M10
d1 [mm]	8.5
d2 [mm]	13.5
B [mm]	8.2
Performance Specifications	
Dynamic C [N]	14700
Static C0 [N]	13187
Capacity Per Bearing [N]	4396
Weight	
Per Rail [g]	2114