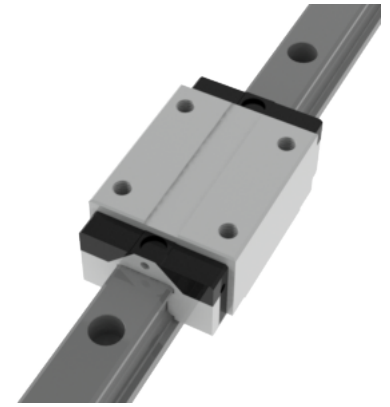
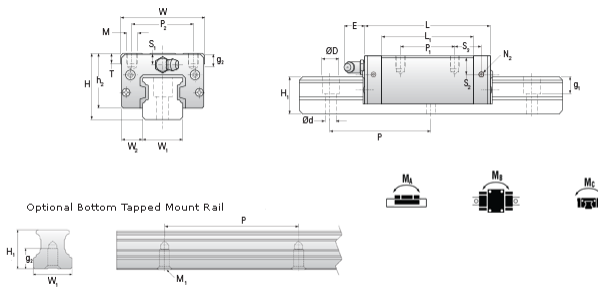


## NHRC 20 MN Assembly

Call 800-321-7800 or visit us online at [www.nookindustries.com](http://www.nookindustries.com) to configure and order your NHRC 20 MN Assembly today!



<b>Dimensions</b>	
H [mm]	30
W2 [mm]	12
<b>Standard Caged Ball Block Four Mounting Holes (Runner Block)Details</b>	
Size [mm]	20
<b>(Runner Block)Dimensions</b>	
W [mm]	44
L [mm]	70.2
L1 [mm]	52
h2 [mm]	24.5
P1 [mm]	36
P2 [mm]	32
M1 [mm]	—
M × g2	M5 × 8.5
T [mm]	8
N1	M3 × 7.5
N2	M3 × 5.5
N3 [O-Ring Seal]	P4
E [mm]	10
S1 [mm]	6
S2 [mm]	9.4
S3 [mm]	11
S4 [mm]	11.7
<b>(Runner Block)Forces and Torques</b>	
Basic Load Ratings C [kN]	17.1
Basic Load Ratings C0 [kN]	30
Static Moment Ratings-Ma [N-m]	230.0
Static Moment Ratings-Mb [N-m]	230.0
Static Moment Ratings-Mc [N-m]	325.0
<b>(Runner Block)Weight</b>	
Weight-Block [g]	318
<b>Caged Ball Rail Top Mount (Top Mount Rail)Details</b>	
Size [mm]	20
<b>(Top Mount Rail)Dimensions</b>	
W1 [mm]	20
H1 [mm]	20
P [mm]	60
D [mm]	9.5
d1 [mm]	6
g1 [mm]	8.5
<b>(Top Mount Rail)Weight</b>	
Weights-Rail [g/m]	2280.0
<b>Caged Ball Rail Bottom Tapped Mount (Bottom Mount Rail)Details</b>	
Size [mm]	20
<b>(Bottom Mount Rail)Dimensions</b>	
W1 [mm]	20
H1 [mm]	20
P [mm]	60
M × g3	M6 × 10
<b>(Bottom Mount Rail)Weight</b>	
Weights-Rail [g/m]	2280.0