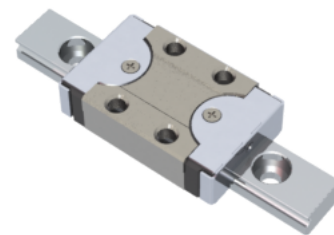


NMR 9MN ZUE Assembly

Call 800-321-7800 or visit us online at www.nookindustries.com to configure and order your NMR 9MN ZUE Assembly today!



Dimensions

H [mm]	10
W2 [mm]	5.5

Standard Miniature Block Four Mounting Holes (Runner Block)Details

Size [mm]	9
-----------	---

(Runner Block)Dimensions

W [mm]	20
L [mm]	31.6
L1 [mm]	20.5
h2 [mm]	8.5
P1 [mm]	10
P2 [mm]	15
M × g2	M3 × 3.0
Ø [mm]	1.3
S [mm]	2.2
T [mm]	3.3

(Runner Block)Forces and Torques

Basic Load Ratings C [N]	1570
Basic Load Ratings C0 [N]	2495
Static Moment Ratings-Ma [N-m]	6.4
Static Moment Ratings-Mb [N-m]	6.4
Static Moment Ratings-Mc [N-m]	11.7

(Runner Block)Weight

Weight-Block [g]	18
------------------	----

Standard Miniature Rail Top Mount

(Top Mount Rail)Details

Size [mm]	9
-----------	---

(Top Mount Rail)Dimensions

H [mm]	10
W1 [mm]	9
H1 [mm]	5.5
P [mm]	20
D [mm]	6
d1 [mm]	3.5
g1 [mm]	3.5

(Top Mount Rail)Weight

Weights-Rail [g/m]	301.0
--------------------	-------

Standard Miniature Rail Bottom Tapped Mount

(Bottom Mount Rail)Details

Size [mm]	9
-----------	---

(Bottom Mount Rail)Dimensions

H1 [mm]	5.5
W1 [mm]	9
P [mm]	20
M1	M4 x 0.7

(Bottom Mount Rail)Weight

Weights-Rail [g/m]	301.0
--------------------	-------