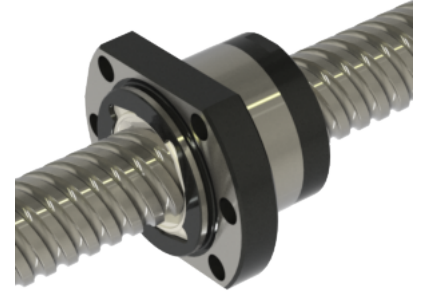
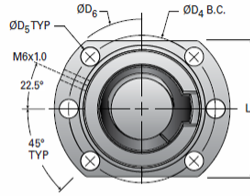
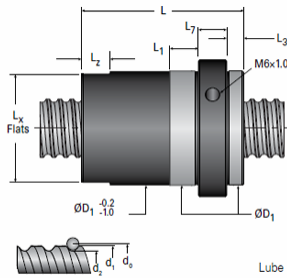


## MBN32x32R-4FW

Call 800-321-7800 or visit us online at [www.nookindustries.com](http://www.nookindustries.com) to configure and order your MBN32x32R-4FW today!



Lube hole can be on either side of nut depending on size.  
See table below for lube hole location.

### Product Info

Nominal Rod Diameter [mm]	32
Material	Alloy
Thread Direction	RH

### Details

Lead [mm]	32
Active Turns	4
Nominal Ball Dia. [mm]	3.969
Screw Weight [kg/m]	5.54
Nut Weight [kg]	0.81
Lube Hole Locaton	L
End Code for Types 1,2, and 3	25
End Code for Types 4	16
End Code for Types 5	25
End Code for Types 6	25
End Code for Types 7	25

### Performance Specifications

Dynamic Load Ca [N]	18020
Static Load [N]	41150
Linear Speed (Based on DN Values) [mm/min]	70000

### Screw Dimensions

d0 [mm]	32
d1 [mm]	31.17
d2 [mm]	27.90

### Nut Dimensions

D1 (g6) [mm]	56
L [mm]	50
L1 [mm]	20
Lx [mm]	54
Lz [mm]	5
L3 (min) [mm]	5
L7 [mm]	14
L8 [mm]	65
D4 [mm]	71
D5 [mm]	6 × 9
D6 [mm]	86