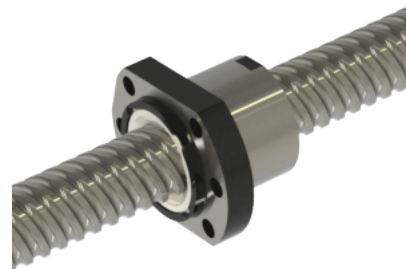
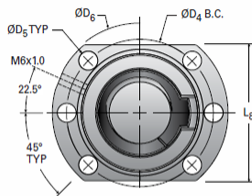
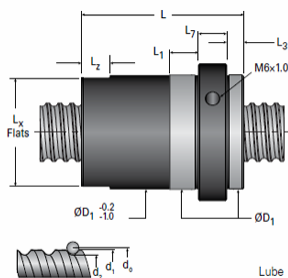


MBN25x25R-4FW

Call 800-321-7800 or visit us online at www.nookindustries.com to configure and order your MBN25x25R-4FW today!



Lube hole can be on either side of nut depending on size.
See table below for lube hole location.

Product Info

| | |
|---------------------------|-------|
| Nominal Rod Diameter [mm] | 25 |
| Material | Alloy |
| Thread Direction | RH |

Details

| | |
|-------------------------------|-------|
| Lead [mm] | 25 |
| Active Turns | 4 |
| Nominal Ball Dia. [mm] | 3.500 |
| Screw Weight [kg/m] | 3.28 |
| Nut Weight [kg] | 0.27 |
| Lube Hole Locaton | L |
| End Code for Types 1,2, and 3 | 20 |
| End Code for Types 4 | 12 |
| End Code for Types 5 | 20 |
| End Code for Types 6 | 20 |
| End Code for Types 7 | 20 |

Performance Specifications

| | |
|--|-------|
| Dynamic Load Ca [N] | 13680 |
| Static Load [N] | 28500 |
| Linear Speed (Based on DN Values) [mm/min] | 70000 |

Screw Dimensions

| | |
|---------|-------|
| d0 [mm] | 25 |
| d1 [mm] | 24.26 |
| d2 [mm] | 21.38 |

Nut Dimensions

| | |
|---------------|---------|
| D1 (g6) [mm] | 40 |
| L [mm] | 40 |
| L1 [mm] | 10 |
| Lx [mm] | 39 |
| Lz [mm] | 5 |
| L3 (min) [mm] | 4 |
| L7 [mm] | 10 |
| L8 [mm] | 48 |
| D4 [mm] | 51 |
| D5 [mm] | 6 × 6.6 |
| D6 [mm] | 62 |