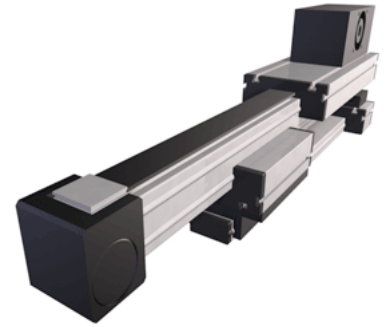
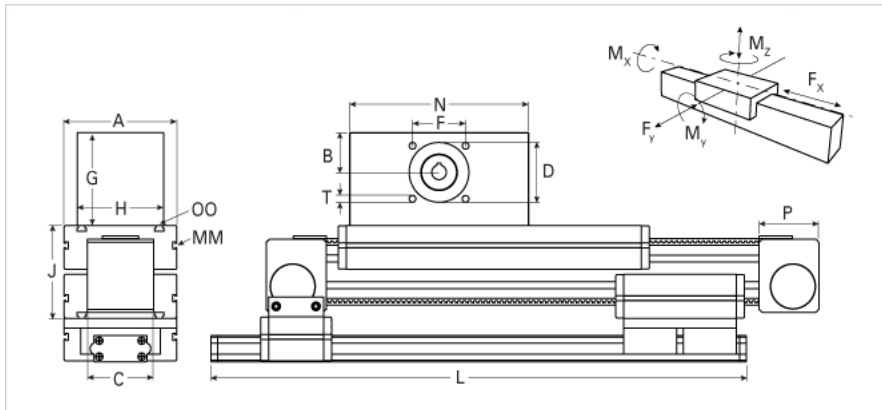


## ELZT 100 Extended Carriage Low Profile Extension

Call 800-321-7800 or visit us online at [www.nookindustries.com](http://www.nookindustries.com) to configure and order your ELZT 100 Extended Carriage Low Profile Extension today!



| Details  |         |
|--|---------|
| Size   | 100     |
| Belt   | 8M100   |
| mm/Rev   | 304     |
| Number of Teeth                                    | 388     |
| Pully Diameter [mm]                                | 96.8    |
| Dimensions   |         |
| Basic Length L [mm]                                | 755     |
| A [mm]   | 230     |
| B [mm]   | 62      |
| C [mm]   | 130     |
| D [mm]   | 110     |
| F [mm]   | 100     |
| G [mm]   | 143     |
| H [mm]   | 160     |
| I [mm]   | 30      |
| J [mm]   | 178     |
| MM   | M10     |
| N [mm]   | 310     |
| OO   | M10     |
| P [mm]   | 110     |
| Q [mm]   | 575     |
| T  | M10     |
| V [mm]   | -       |
| Shaft Diameter and Length [mm]                     | 30 x 55 |
| Key  | 8x7x40  |
| Speed  |         |
| Speed Maximum [m/s]                                | 8       |
| Forces and Torques                                 |         |
| No-load torque [Nm]                                | 2.4     |
| Tensile force 0.2 sec [N]                          | 4300    |
| Tensile force permanent [N]                        | 4000    |
| Fy dynamic [N]                                     | 6500    |
| Fx dynamic [N]                                     | 3500    |
| Fz dynamic [N]                                     | 2200    |
| Mx dynamic [Nm]                                    | 230     |
| My dynamic [Nm]                                    | 270     |
| Mz dynamic [Nm]                                    | 500     |
| Fx static [N]                                      | 4000    |
| Fy static [N]                                      | 8000    |
| Fz static [N]                                      | 3600    |
| Mx static [Nm]                                     | 300     |
| My static [Nm]                                     | 400     |
| Mz static [Nm]                                     | 750     |
| Geometrical moments of inertia of aluminum profile |         |
| Elastic modulus [N/mm <sup>2</sup> ]               | 70000   |
| Ix [mm <sup>4</sup> ]                              | 4440000 |
| Iy [mm <sup>4</sup> ]                              | 4480000 |
| Weight   |         |
| Additional Weight per 100 mm [kg]                  | 1.95    |
| Basic Weight [kg]                                  | 40.6    |