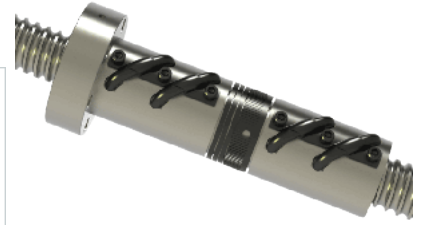
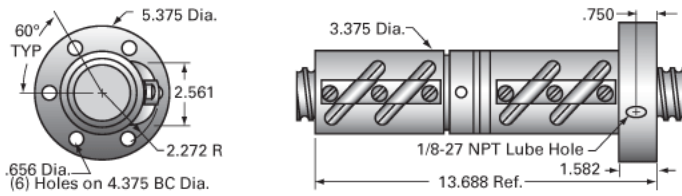


## PowerTrac 2250 - 0500 SGT RA, with SAG Ball Nut, Adjustable

Call 800-321-7800 or visit us online at [www.nookindustries.com](http://www.nookindustries.com) to configure and order your PowerTrac 2250 - 0500 SGT RA, with SAG Ball Nut,



### Inch Ball Screw

#### (Screw)Product Info

Screw Code	2250-0500 SGT RA
Precision	SGT
Screw Material	4150
Thread Direction	RH

#### (Screw)Details

Ball Circle Diameter [in]	2.250
Lead [in]	0.500
Root Diameter [in]	1.850
End Code for Types 1,2,3,5 [* Journals may show tracings of the thread]	25
End Code for Type 4 [* Journals may show tracings of the thread]	28

#### (Screw)Performance Specifications

Lead Accuracy +/- [in./ft.]	0.0005
-----------------------------	--------

#### (Screw)Part Numbers

2 ft. Part Number	
4 ft. Part Number	
6 ft. Part Number	GT22550R72
8 ft. Part Number	
12 ft. Part Number	
16 ft. Part Number	
20 ft. Part Number	

#### (Screw)Weight

Screw Weight [lb./ft.]	10.80
------------------------	-------

### Inch Ball Nut, for SGT, Ground Accuracy, Preloaded, Adjustable, SAG

#### (Nut)Product Info

Ball Nut Number	SAG0706
Thread Direction	RH

#### (Nut)Details

Ball Circle Diameter [in]	2.250
Lead [in]	0.500
Nominal Ball Diameter [in]	0.375
Root diameter [in]	1.850

#### (Nut)Forces and Torques

Torque to Raise 1 lb. [in-lb]	0.088
-------------------------------	-------

#### (Nut)Flange Part Numbers

Flange Part Number	INCLUDED
--------------------	----------

#### (Nut)Wiper Part Numbers

Wiper Kit Part Number	BRUSH
-----------------------	-------

#### (Nut)Weight

Nut Weight [lb]	24.20
-----------------	-------

#### (Nut)Performance Specifications

Maximum Adjustable Preload [lb]	6390
Spring Rate x 10<sup>6</sup> [lb./in.]	
Dynamic Load [lb]	30000
Static Load [lb]	142660