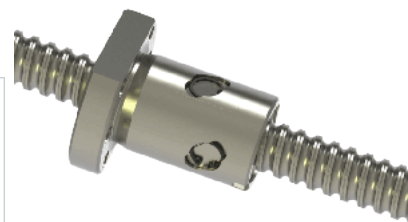
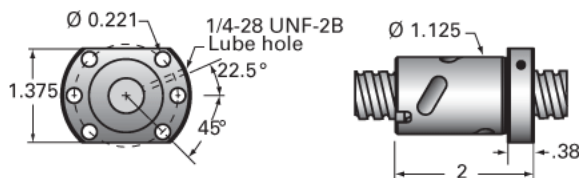


PowerTrac 0631 - 0200 XPR RA, with SSN Ball Nut, Internal

Call 800-321-7800 or visit us online at www.nookindustries.com to configure and order your PowerTrac 0631 - 0200 XPR RA, with SSN Ball Nut, Internal



Inch Ball Screw

(Screw)Product Info

Screw Code	0631-0200 XPR RA
Precision	XPR
Screw Material	4150
Thread Direction	RH

(Screw)Details

Ball Circle Diameter [in]	0.631
Lead [in]	0.200
Root Diameter [in]	0.500
End Code for Types 1,2,3,5 [* Journals may show tracings of the thread]	12
End Code for Type 4 [* Journals may show tracings of the thread]	8

(Screw)Performance Specifications

Lead Accuracy +/- [in./ft.]	0.0010
-----------------------------	--------

(Screw)Part Numbers

2 ft. Part Number	
4 ft. Part Number	XPR6320R48
6 ft. Part Number	XPR6320R72
8 ft. Part Number	
12 ft. Part Number	
16 ft. Part Number	
20 ft. Part Number	

(Screw)Weight

Screw Weight [lb./ft.]	0.86
------------------------	------

Inch Ball Nut, for SGT and XPR, Ground Accuracy, Preloaded, Fixed, SSN

(Nut)Product Info

Ball Nut Number	SSN10304
Thread Direction	RH

(Nut)Details

Ball Circle Diameter [in]	0.631
Lead [in]	0.200
Nominal Ball Diameter [in]	0.125
Root diameter [in]	0.500

(Nut)Forces and Torques

Torque to Raise 1 lb. [in-lb]	0.035
-------------------------------	-------

(Nut)Flange Part Numbers

Flange Part Number	INTEGRAL
--------------------	----------

(Nut)Wiper Part Numbers

Wiper Kit Part Number	ELASTOMER
-----------------------	-----------

(Nut)Weight

Nut Weight [lb]	0.45
-----------------	------

(Nut)Performance Specifications

Maximum Adjustable Preload [lb]	
Spring Rate x 10 ⁶ [lb./in.]	1.50
Dynamic Load [lb]	450
Static Load [lb]	2115