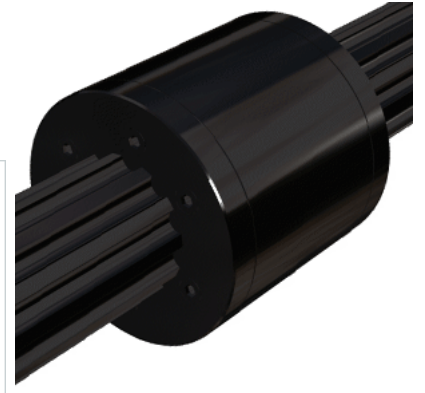
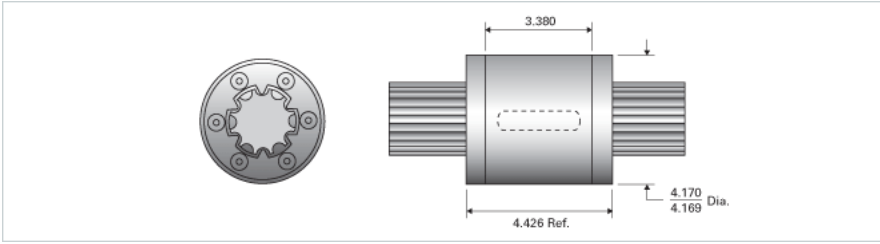


PowerTorq 2500-6-0375 HPR8947

Call 800-321-7800 or visit us online at www.nookindustries.com to configure and order your PowerTorq 2500-6-0375 HPR8947 today!



Inch Ball Spline Inner Race	
(Inch Ball Spline Inner Race(1))Product Info	
Nominal Diameter [in]	2.500
(Inch Ball Spline Inner Race(1))Details	
Active Circuits	6
Root Diameter [in]	2.10
(Inch Ball Spline Inner Race(1))Part Numbers	
12 ft. Part Number	SRR6484
2 ft. Part Number	
4 ft. Part Number	SRR6468
6 ft. Part Number	
8 ft. Part Number	SRR6476
(Inch Ball Spline Inner Race(1))Weight	
Inner Race Weight [lb./ft.]	15.8
Inch High Performance Ball Spline Outer Race	
(Inch High Performance Ball Spline Outer Race(2))Product Info	
Part Number	HPR8947
Nominal Diameter [in]	2.500
(Inch High Performance Ball Spline Outer Race(2))Details	
Active Circuits	6
Nominal Ball Diameter [in]	0.375
Optional Keyway	1/2x1/4x3.000
Ball Return	Cast
Balls per Outer Race	132
(Inch High Performance Ball Spline Outer Race(2))Weight	
Outer Race Weight [lb]	6.60
(Inch High Performance Ball Spline Outer Race(2))Performance Specifications	
Dynamic Torque [in-lb]	27000
Static Torque [in-lb]	62250