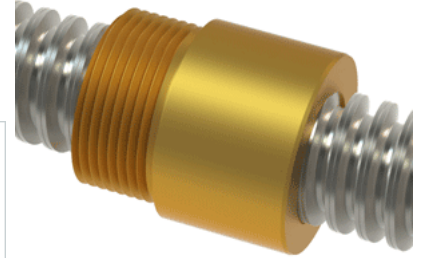


## PowerAC 3/4"-6 RS w/Bronze Nut

Call 800-321-7800 or visit us online at [www.nookindustries.com](http://www.nookindustries.com) to configure and order your PowerAC 3/4"-6 RS w/Bronze Nut today!



### Rolled Inch Acme Screw

#### (Screw)Product Info

Screw Code	076-RS
Thread Direction	RH
Screw Material	300 Series Stainless

#### (Screw)Details

Lead [in]	0.166
Starts	1
Pitch [in]	0.166
Turns Per Inch	6
Threads per Inch	6
Thread Code	076
Form	2C
End Code for Types 1,2,3,5 [* Journals may show tracings of the thread]	12
End Code for Type 4 [* Journals may show tracings of the thread]	8

#### (Screw)Dimensions

A - Root Diameter Minimum [in]	0.537
D - Nominal Rod Diameter [in]	0.750

#### (Screw)Part Numbers

3 ft. Part Number	91076
6 ft. Part Number	92076
12 ft. Part Number	93076
20 ft. Part Number	

#### (Screw)Performance Specifications

Lead Accuracy +/- [in/in]	0.0003
---------------------------	--------

#### (Screw)Weight

Screw Weight [lb./ft.]	1.17
------------------------	------

### Inch Acme Nut with Optional Flange

#### (Nut)Product Info

Part Number	20076
Thread Direction	RH
Type	Bronze

#### (Nut)Details

Lead [in]	0.166
Starts	1
Pitch [in]	0.166
Turns Per Inch	6
Lash (Maximum Axial) [in]	0.008
Nominal Rod Diameter [in]	0.750
Threads per Inch	6
Thread Code	076
Form	2C

#### (Nut)Dimensions

B [in]	1.25
C [in]	1.13
E [in]	0.50
F (n) Dia. [in]	(4) .266
F BCD [in]	2.090
G [in]	0.53
H [in]	2.63
J [in]	1.000-18

#### (Nut)Forces and Torques

Torque to Raise 1 lb. [in-lb]	0.073
-------------------------------	-------

#### (Nut)Flange Part Numbers

Flange No-Lash Part Number	73262
Flange Part Number	70262

#### (Nut)Weight

Flange Weight [lb]	0.78
Nut Weight [lb]	0.23

#### (Nut)Performance Specifications

Efficiency [%]	36
----------------	----

Lead Accuracy +/- [in/in]	0.0003
Dynamic Load Capacity [lb]	2812
Static Load Capacity [lb]	9000