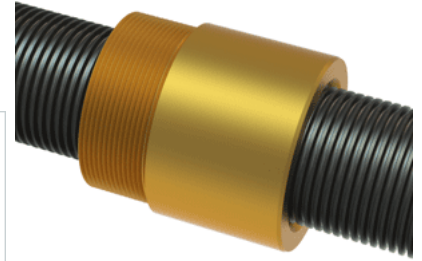


PowerAC 1 1/2"-10 LA w/Bronze Nut

Call 800-321-7800 or visit us online at www.nookindustries.com to configure and order your PowerAC 1 1/2"-10 LA w/Bronze Nut today!



Rolled Inch Acme Screw

(Screw)Product Info

Screw Code	150-LA
Thread Direction	LH
Screw Material	4140 Series

(Screw)Details

Lead [in]	0.100
Starts	1
Pitch [in]	0.100
Turns Per Inch	10
Threads per Inch	10
Thread Code	150
Form	2C
End Code for Types 1,2,3,5 [* Journals may show tracings of the thread]	30
End Code for Type 4 [* Journals may show tracings of the thread]	19

(Screw)Dimensions

A - Root Diameter Minimum [in]	1.355
D - Nominal Rod Diameter [in]	1.500

(Screw)Part Numbers

3 ft. Part Number	51150
6 ft. Part Number	52150
12 ft. Part Number	53150
20 ft. Part Number	

(Screw)Performance Specifications

Lead Accuracy +/- [in/in]	0.0003
---------------------------	--------

(Screw)Weight

Screw Weight [lb./ft.]	5.47
------------------------	------

Inch Acme Nut with Optional Flange

(Nut)Product Info

Part Number	80150
Thread Direction	LH
Type	Bronze

(Nut)Details

Lead [in]	0.100
Starts	1
Pitch [in]	0.100
Turns Per Inch	10
Lash (Maximum Axial) [in]	0.009
Nominal Rod Diameter [in]	1.500
Threads per Inch	10
Thread Code	150
Form	2C

(Nut)Dimensions

B [in]	2.30
C [in]	2.13
E [in]	0.81
F (n) Dia. [in]	(4) .397
F BCD [in]	3.440
G [in]	0.83
H [in]	4.20
J [in]	1.967-18

(Nut)Forces and Torques

Torque to Raise 1 lb. [in-lb]	0.110
-------------------------------	-------

(Nut)Flange Part Numbers

Flange No-Lash Part Number	73420
Flange Part Number	FLG7572

(Nut)Weight

Flange Weight [lb]	3.19
Nut Weight [lb]	1.28

(Nut)Performance Specifications

Efficiency [%]	15
----------------	----

Lead Accuracy +/- [in/in]	0.0003
Dynamic Load Capacity [lb]	11250
Static Load Capacity [lb]	36000