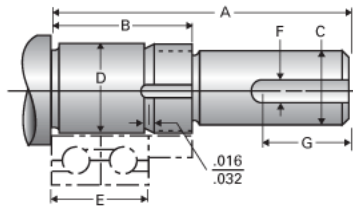


Type 2L, End Code 65

Call 800-321-7800 or visit us online at www.nookindustries.com to configure and order your Type 2L, End Code 65 today!



Product Info

Nominal Bearing Journal Size 65

Dimensions

C Maximum [in]	2.375
C Minimum [in]	2.374
D Maximum [in]	2.5591
D Minimum [in]	2.5585
F [in]	N/A
G [in]	N/A
Typical Journal for Single Bearing A [in]	7.99
Typical Journal for Single Bearing B [in]	3.24
Typical Journal for Single Bearing E [in]	2.598
Lock Nut	N-13
Lock Washer	W-13