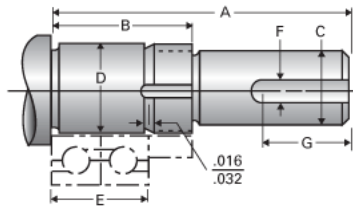


Type 2L, End Code 60

Call 800-321-7800 or visit us online at www.nookindustries.com to configure and order your Type 2L, End Code 60 today!



Product Info

Nominal Bearing Journal Size 60

Dimensions

C Maximum [in]	2.250
C Minimum [in]	2.249
D Maximum [in]	2.3627
D Minimum [in]	2.3621
F [in]	N/A
G [in]	N/A
Typical Journal for Single Bearing A [in]	6.78
Typical Journal for Single Bearing B [in]	3.10
Typical Journal for Single Bearing E [in]	2.442
Lock Nut	N-12
Lock Washer	W-12