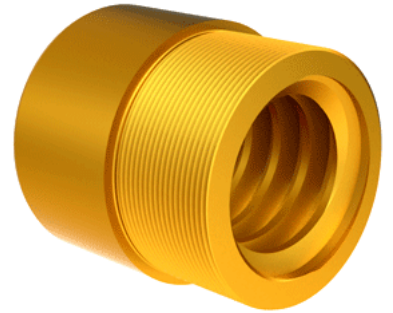


## Bronze Acme Nut 2 1/2"-2 RH

Call 800-321-7800 or visit us online at [www.nookindustries.com](http://www.nookindustries.com) to configure and order your Bronze Acme Nut 2 1/2"-2 RH today!



Product Info	
Part Number	20252
Thread Direction	RH
Type	Bronze
Details	
Lead [in]	0.500
Starts	1
Pitch [in]	0.500
Turns Per Inch	2
Lash (Maximum Axial) [in]	0.012
Nominal Rod Diameter [in]	2.500
Threads per Inch	2
Thread Code	252
Form	40
Dimensions	
B [in]	3.38
C [in]	3.38
E [in]	1.56
F (n) Dia. [in]	(6) .656
F BCD [in]	4.380
G [in]	1.58
H [in]	5.38
J [in]	3.137-12
Forces and Torques	
Torque to Raise 1 lb. [in-lb]	0.234
Flange Part Numbers	
Flange No-Lash Part Number	73540
Flange Part Number	FLG7574
Weight	
Flange Weight [lb]	9.88
Nut Weight [lb]	5.00
Performance Specifications	
Efficiency [%]	34
Lead Accuracy +/- [in/in]	0.0003
Dynamic Load Capacity [lb]	31250
Static Load Capacity [lb]	100000