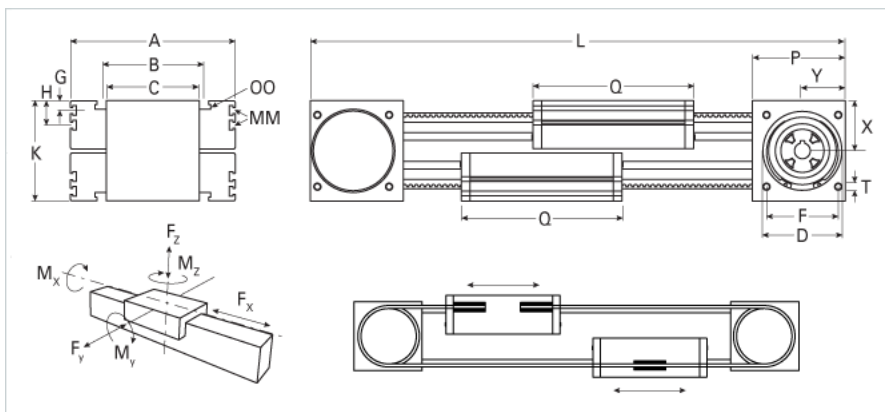
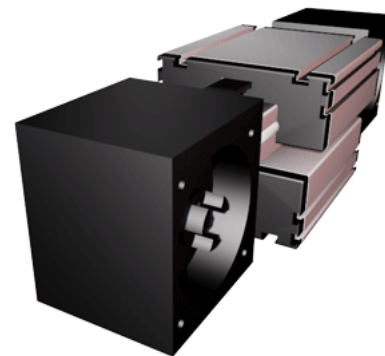


ELZG 80S

Call 800-321-7800 or visit us online at www.nookindustries.com to configure and order your ELZG 80S today!



Details	
Size	80S
Belt	8M30
mm/Rev	320
Number of Teeth	40
Dimensions	
Basic Length L [mm]	480
A [mm]	190
B [mm]	126
C [mm]	118
D [mm]	110
F [mm]	100
G [mm]	12.5
H [mm]	30
K [mm]	142
MM	M6
OO	M8
P [mm]	130
Q [mm]	214
T	M10
X [mm]	70
Y [mm]	60
Shaft Diameter and Length [mm]	22 x 45
Key	6x6x40
Speed	
Speed Maximum [m/s]	8
Forces and Torques	
No-load torque [Nm]	1.2
Tensile force 0.2 sec [N]	2090
Tensile force permanent [N]	1900
Fx dynamic [N]	1800
Fy dynamic [N]	3600
Fz dynamic [N]	1800
Mx dynamic [Nm]	140
My dynamic [Nm]	230
Mz dynamic [Nm]	220
Fx static [N]	1900
Fy static [N]	4600
Fz static [N]	3000
Mx static [Nm]	170
My static [Nm]	270
Mz static [Nm]	300
Geometrical moments of inertia of aluminum profile	
Elastic modulus [N/mm ²]	70000
Ix [mm ⁴]	1899000
Iy [mm ⁴]	1897000
Weight	
Additional Weight per 100 mm [kg]	1.15
Basic Weight [kg]	24.5
Values for Calculating Inertias	
Pulley Material	Steel
Pulley Diameter [mm]	101.86
Effective Pulley Width [mm]	118
Belt Weight [kg/m]	0.256

Standard Carriage Weight [kg]

3.52

No-load torque [Nm]

1.2

Friction Coefficient

0.01
