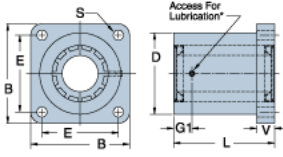
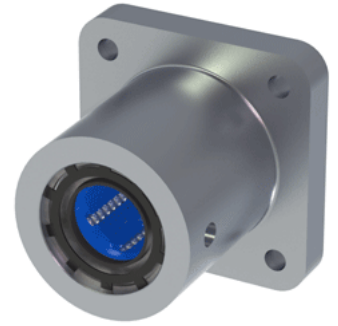


## Excel XEP-12-FLM

Call 800-321-7800 or visit us online at [www.nookindustries.com](http://www.nookindustries.com) to configure and order your Excel XEP-12-FLM today!



### Product Info

Nominal Shaft Diameter [in]	$\frac{3}{4}$
Part Number	XEP-12-FLM

### Dimensions

B [in]	2.38
D [in]	1.75
E +/-0.005 [in]	1.750
G1 [in]	0.37
L [in]	2.06
V [in]	0.38
S Hole Dia. [in]	0.22

### Performance Specifications

Dynamic Load Maximum [lb]	406
Dynamic Load Normal [lb]	383
Static Load Maximum [lb]	351
Static Load Normal [lb]	274