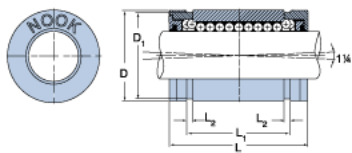
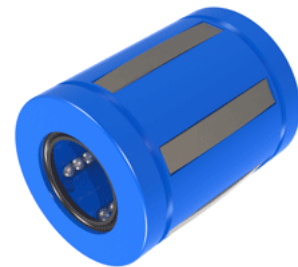


EXCEL XLEC12UU

Call 800-321-7800 or visit us online at www.nookindustries.com to configure and order your EXCEL XLEC12UU today!



Product Info

Nominal Shaft Diameter [in]	$3 \frac{1}{4}$
Part Number	XLEC12UU

Dimensions

D1 [in]	1.1760
L Maximum [in]	1.605
L Minimum [in]	1.625
L1 Maximum [in]	1.250
L1 Minimum [in]	1.270
L2 [in]	0.056
Housing Bore Diameter D Maximum [in]	1.2505
Housing Bore Diameter D Minimum [in]	1.2500

Performance Specifications

Number of Ball Circuits	6
Dynamic Load Maximum [lb]	406
Dynamic Load Normal [lb]	383
Static Load Maximum [lb]	351
Static Load Normal [lb]	274